

A woman with long, wavy brown hair is wearing a bright yellow, short-sleeved dress. She is looking towards the camera with a slight smile. The background is a textured, light-colored wall with some darker, mottled patches. The lighting is warm and soft, creating a gentle glow around her. The text 'PAGES' is written vertically in a serif font, and 'FRANZIUS' is written horizontally at the bottom in a similar serif font.

P
A
G
E
S

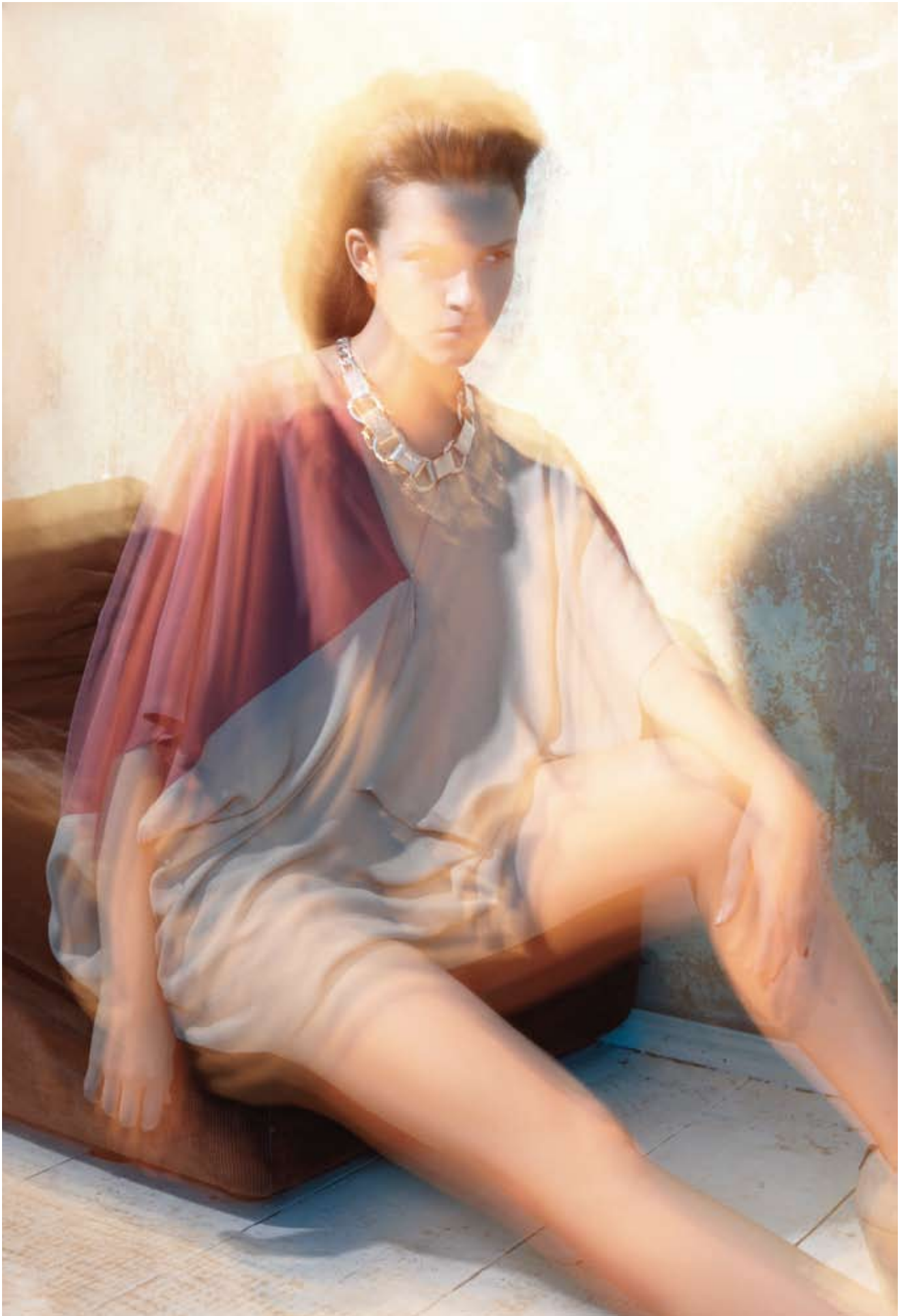
FRANZIUS

P
A
G
E
S

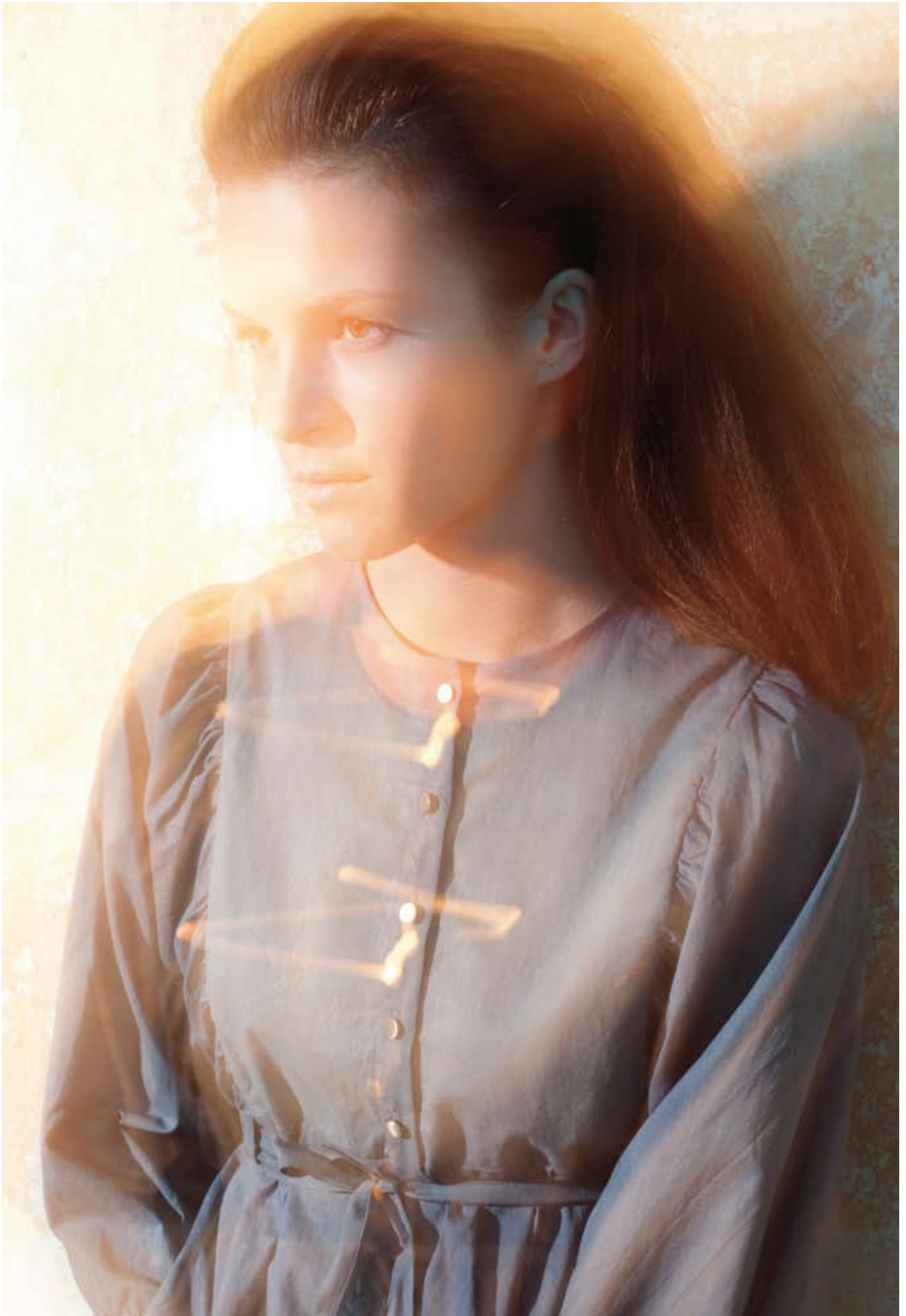
FRANZIUS

SS/2011























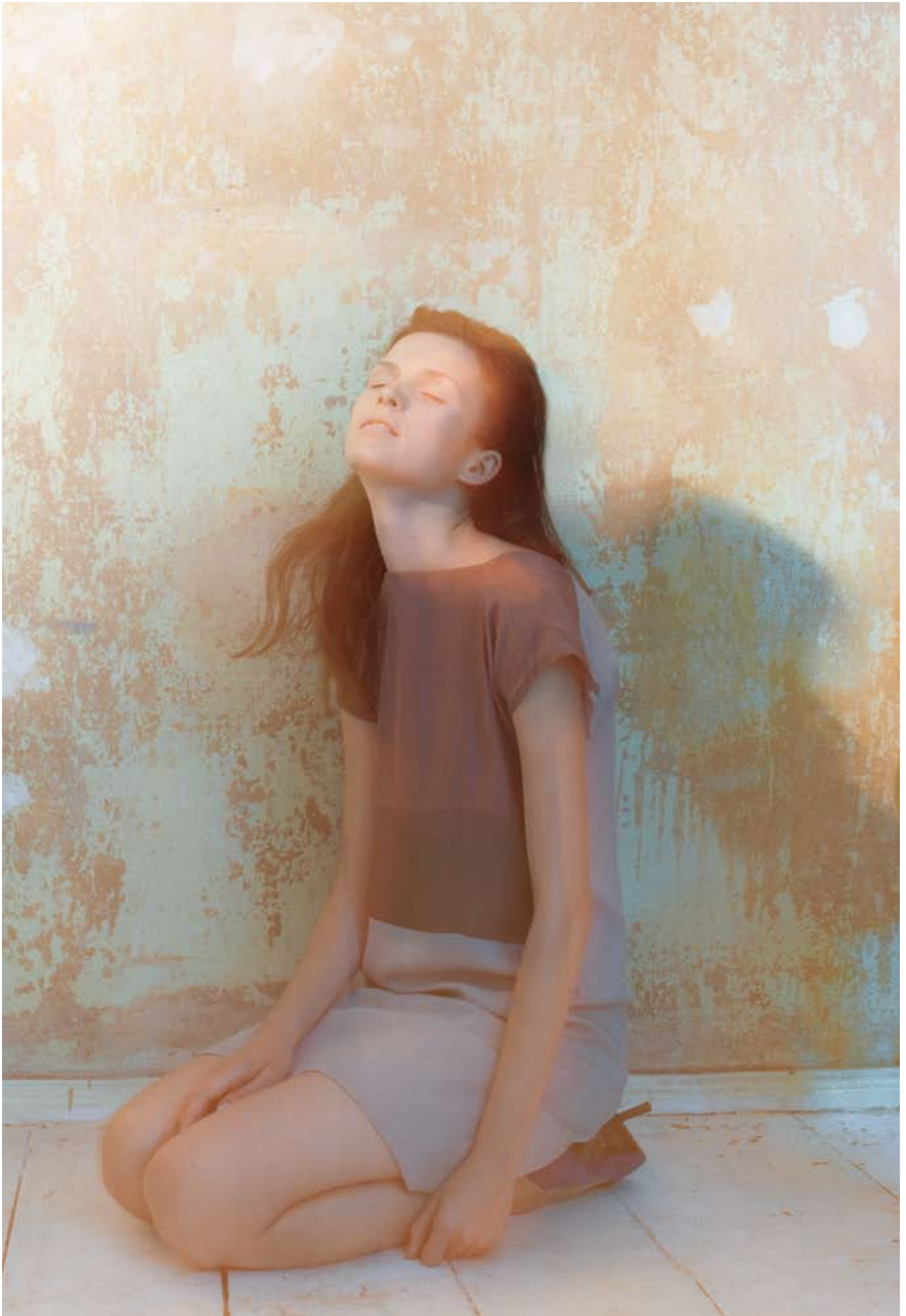




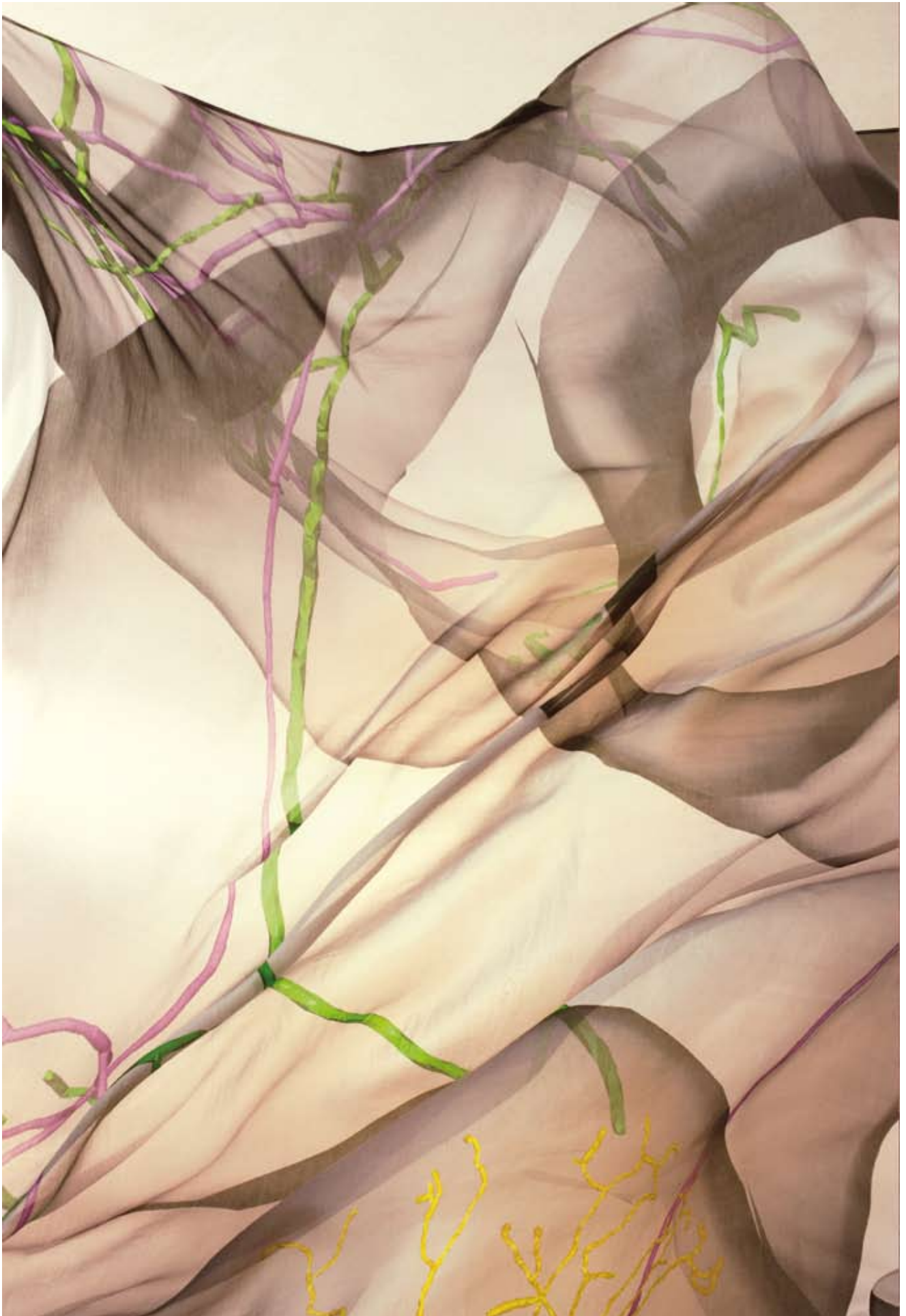


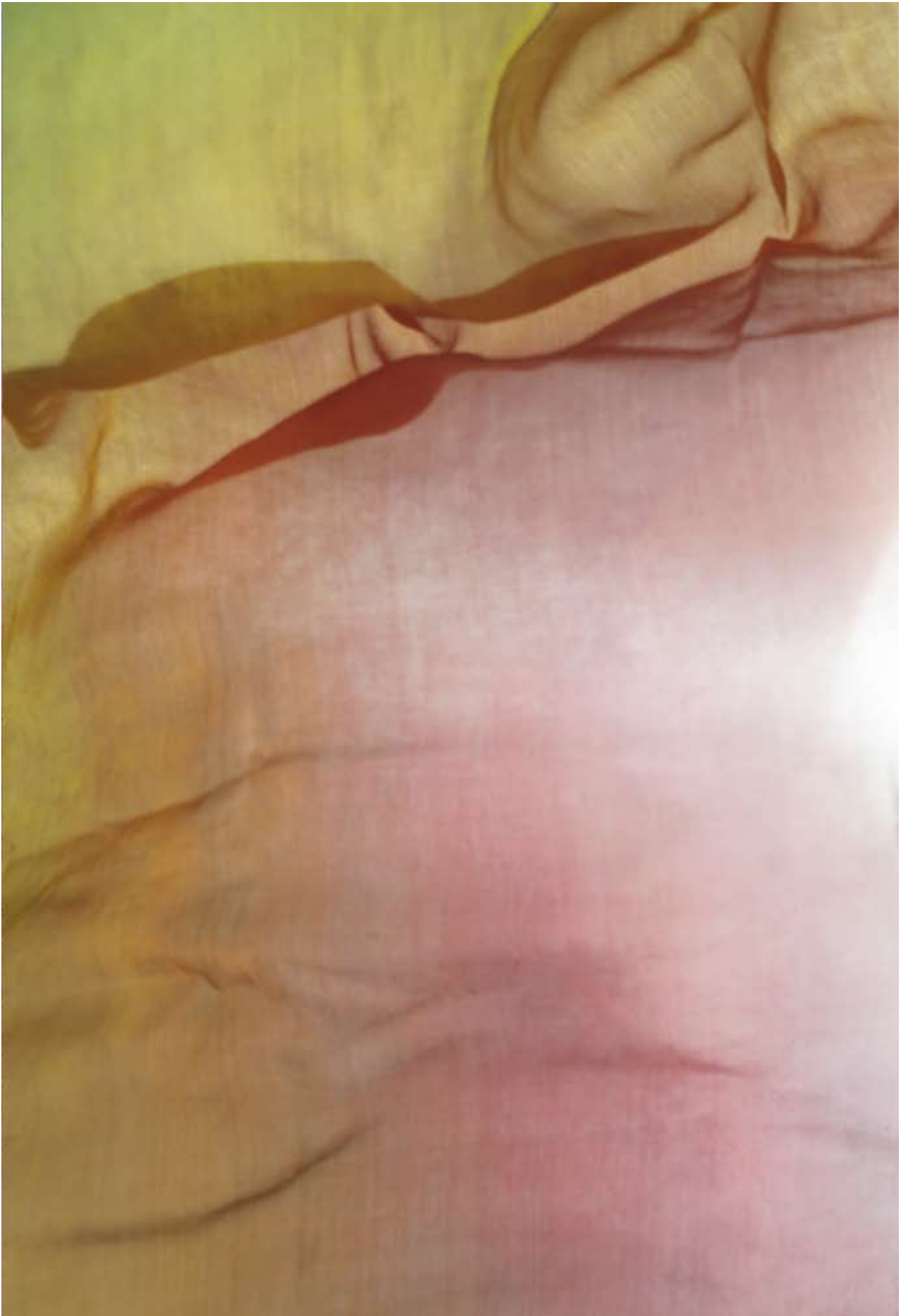












FRANZIUS

SS/2011

Photography
WIEBKE BOSSE

Hair & Make up
CHRISTIANE BUCHHOLZ

Model
ALEKSANDRA, M4

Design
BUREAU MARIO LOMBARDO

Print
EUROPRINT MEDIEN GMBH, BERLIN

Postproduction
RECOM

Special thanks to
MARITA, JANA, PIET UND VOLKER

FRANZIUS
Lilli - Henoch Str. 17
D-10405 Berlin

Tel.: + 49 30 400 45 397
Fax.: + 49 30 400 45 398
Mobil: +49 151 587 731 72

franzius@franzius.eu
www.franzius.eu

P
A
G
E
S

FRANZIUS

SS/2011